

PERFECT HARMONY

The new duplex apartment set in the coastal plain of Sharon (above Tel Aviv) planned and designed by Nitzan Horowitz for a couple and their grown son, incorporates unusual combinations of natural materials in their raw form combined with other ultra-modern clean elements that complement each other and create a unique and unusual space.

Photography by Oded Smadar



NY





“The owners have exquisite taste. They are goal-oriented and knew exactly what they wanted ahead of the renovation...

The owner is an avid nature lover, and it was important to her that we incorporate natural elements in their raw form. From the first planning stages, we discussed the incorporation of natural stone. The couple sent me some beautiful pictures that served as inspiration for the way in which we incorporated the basalt stone walls, imported from Greece, in a variety of ways throughout the property.”

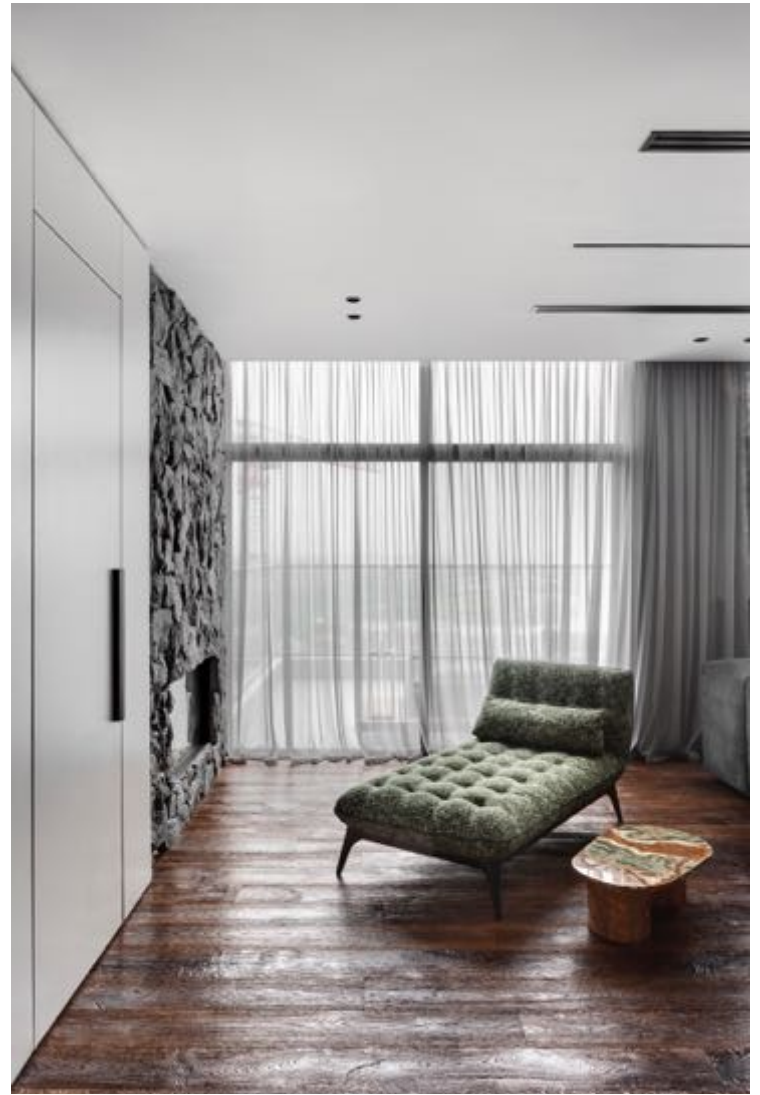
– Nitzan Horowitz

Purchased by the couple shortly before the completion of the works, the new 250 sqm property has been refurbished into a 4-bedroom spacious and well-lit open duplex, with the entire second level dedicated exclusively to the couple's adult child. The entry-level entrance reveals two main elements, a large north-facing window that drenches the large living space in an abundance of natural light, and a dominant 9-meter stone-cladding ‘power wall’ that connects all areas of the open space (a TV corner, a reading area and a well-equipped kitchen).

The designer opted for a minimalist yet

very elegant design, all in gray tones: from light to dark. He chose a large 4-meter cozy velvet sofa, a light rug that contrasts with the dark wooden floor and finally blackout curtains that are ideal for creating a more intimate atmosphere. The only touch of color is given by the green of a couple of cushions. The entrance wall connects with the kitchen that includes graphite-gray nano Formica laminated floor-to-ceiling cabinets that conceal a variety of kitchen appliances, ample storage space and the pantry door. While, wild onyx stone cladding covers the kitchen island, making it a very dominant piece that blends well with the colors and textures of the stone and wooden floors.

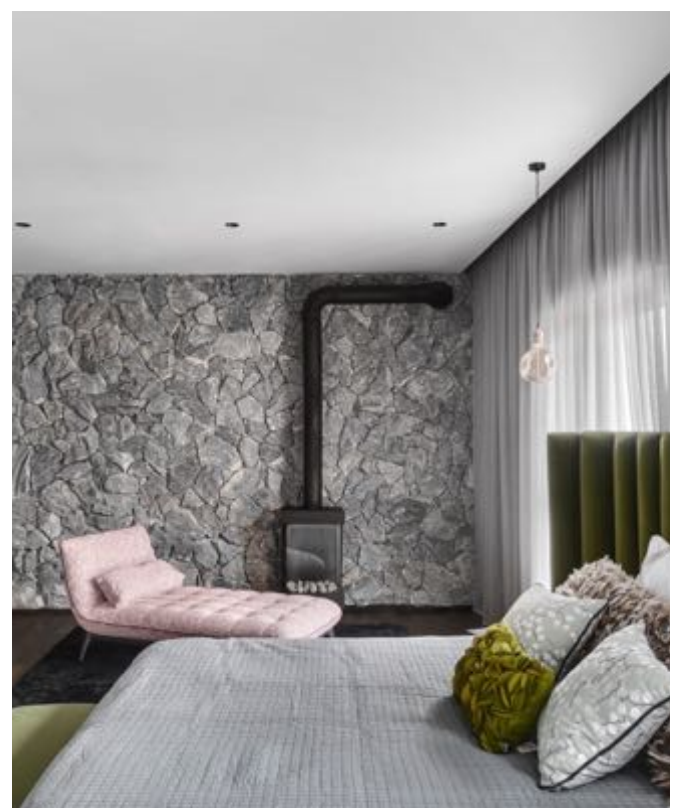
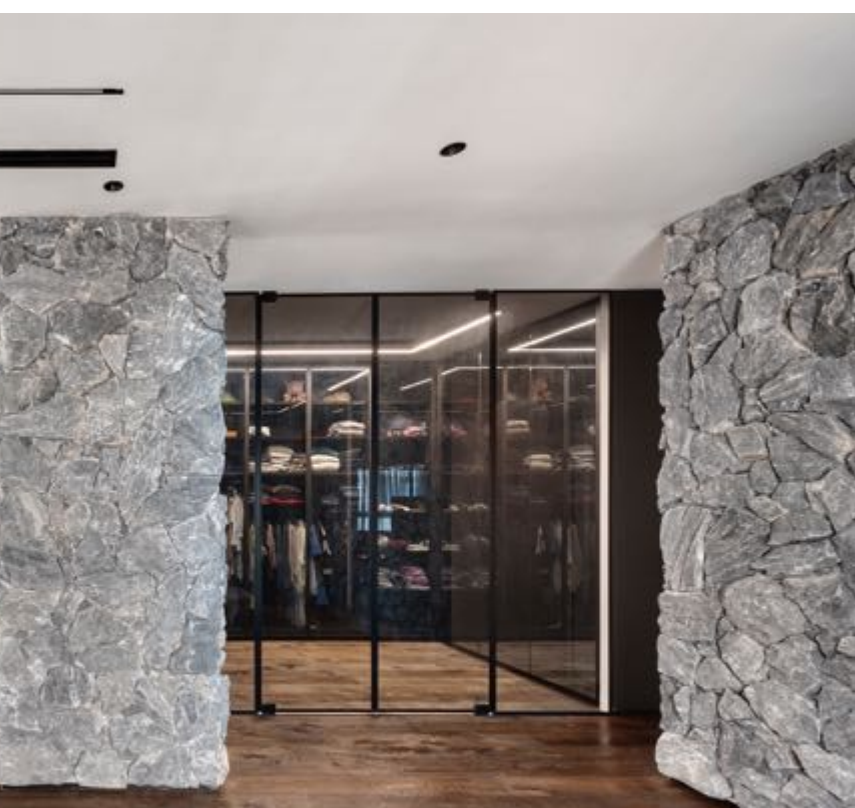
Next to the sofa there is a reading area that includes a wool Chesterfield chaise-lounge and a coffee table of the same onyx stone as the kitchen island. On this side, the stone wall includes a fireplace and a hidden door that conceals the entrance to a safe room turned fully equipped gym.





A corridor leads to a spacious 55 sqm bedroom. Prior to the renovation, this space included 2 bedrooms, a bathroom, and a family room. The designer was able to create a spacious area where all features were fully addressed. The walk-in wardrobe is spacious and includes an elegant u-shaped piece of furniture. The bathroom is unusually large and includes an oval free-standing bath and sink designed to soften the straight lines dominating the space, a walk-in shower, and a smokey floor-to-ceiling mirror that adds reflection and a touch of uniqueness to the space. Concrete-style granite porcelain cladding covers the walls. The bedroom itself is divided into two areas - a sleeping area and a lounging area adjacent to the fireplace wall.







The unusual staircase leads to the top floor: Horowitz chose to remove the original stairwell and replace it with a clean geometrical glass banister in shades of grey and wooden flooring was installed on the stairs.

"A 60 sqm kingdom" designed for the couple's 20-year-old son is an open space that includes a sleeping area, a bathroom, an entertaining area and study corner. In addition, he enjoys a 60 sqm west facing private balcony overlooking the sea.

In order to create a partition between the sleeping area and the bath area, Horowitz created a multi-functional piece that incorporates multiple storage areas as well as a video/audio unit. The unit is Formica laminated in a grey shade that matches that of the stone wall and the overall natural concept.

Similar to the bathroom in the first-level master bedroom, Horowitz chose basalt granite porcelain cladding in the second-level bath area too. A natural granite stone



and Formica laminate were used for the bath area cupboard and fitted in a unique composition, so they look almost as though they are blending into each other.

“The materials used in the first level continue into the second level. These are dynamic and intense materials that blend really well across the second level and are emphasized by the color scheme, the use of grey woodwork and textures that work well with the natural materials.”

